



EVALUATING GRAZING SYSTEMS OPTIONS

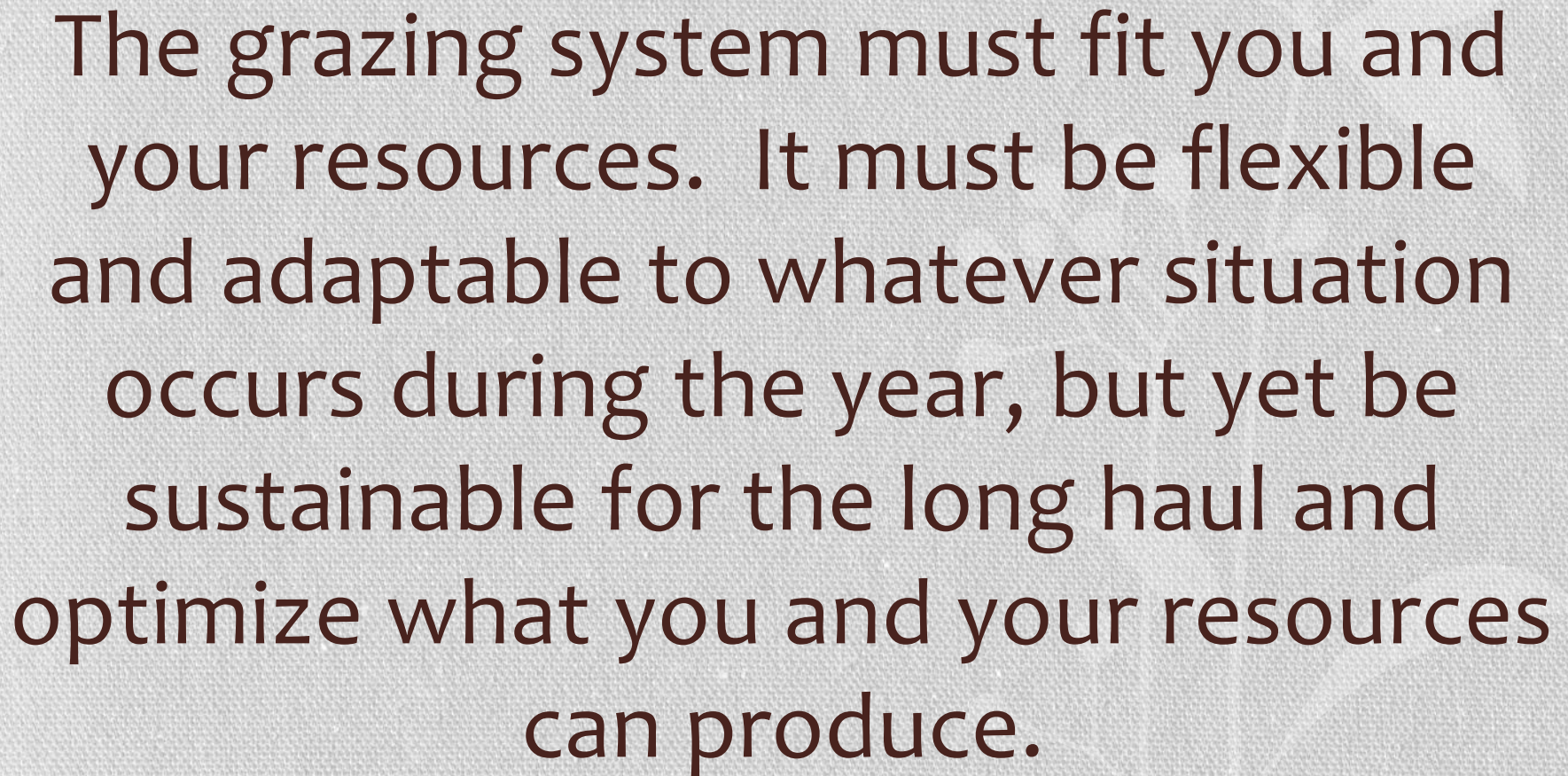
Tippetts Myers Ranch, LLC
Lewellen, NE

Lynn Myers

Three considerations when building a systems level ranch plan

- Drought/Disaster Plan
- Grazing Plan
- Transition Plan





The grazing system must fit you and your resources. It must be flexible and adaptable to whatever situation occurs during the year, but yet be sustainable for the long haul and optimize what you and your resources can produce.

Considerations you must look at to achieve sustainability in all areas:

- Pregnancy rate
- Length of breeding season
- Performance and rate of gain
- Calving date and breeding season
- Basic marketing plan and target dates
- Available labor force
- Cost and need of infrastructure
- Do you want to maximize or optimize in one area of your operation?
How does that affect the other areas?

When you have considered these questions, you have a framework to build your whole ranch plan. That plan should include a way to monitor your progress on your ranch.

You can't know where
you are going if you don't
know where you've been
and where you are at.

A stylized, dark brown illustration of a plant with several large, pointed leaves and a cluster of small, round berries or buds on a thin stem, positioned on the left side of the slide.

Our Grazing System:

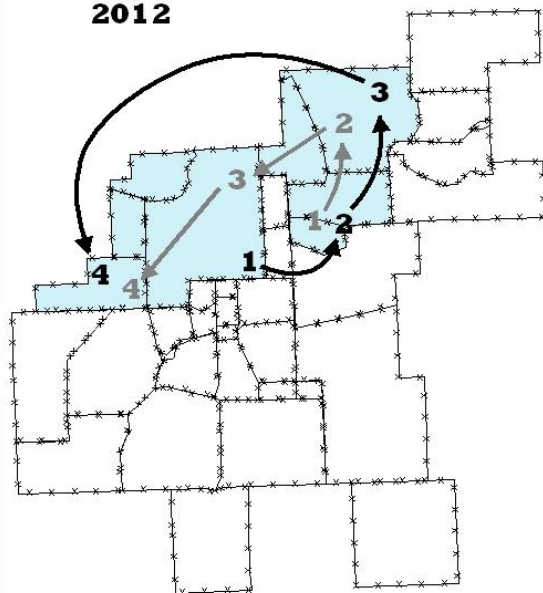
THREE YEAR DEFERRED
ROTATIONAL GRAZING PLAN

EARLY SUMMER
LATE SUMMER
WINTER/DEFERRED

TIPPETTS-MYERS RANCH LLC

BUGGYPOLE RANCH HERD A

2011
2012



Legend

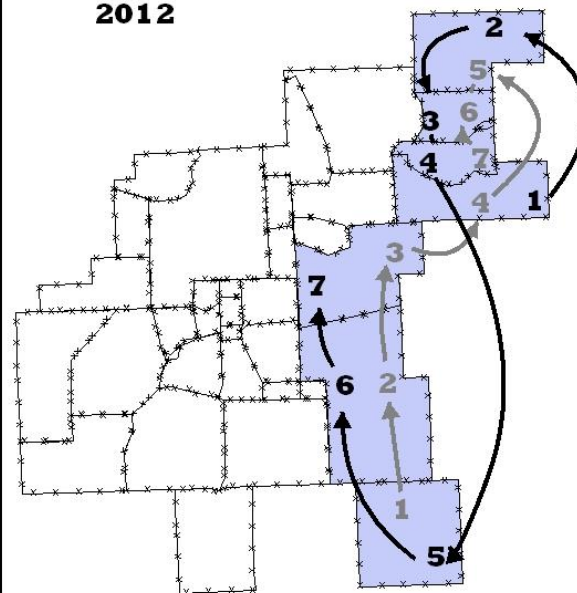
- TIPPETTS-MYERS RANCH LLC
- FERRELL CATTLE CO- BUGGYPOLE RANCH
- Buggypole Ranch Herd A



TIPPETTS-MYERS RANCH LLC

BUGGYPOLE RANCH HERD B

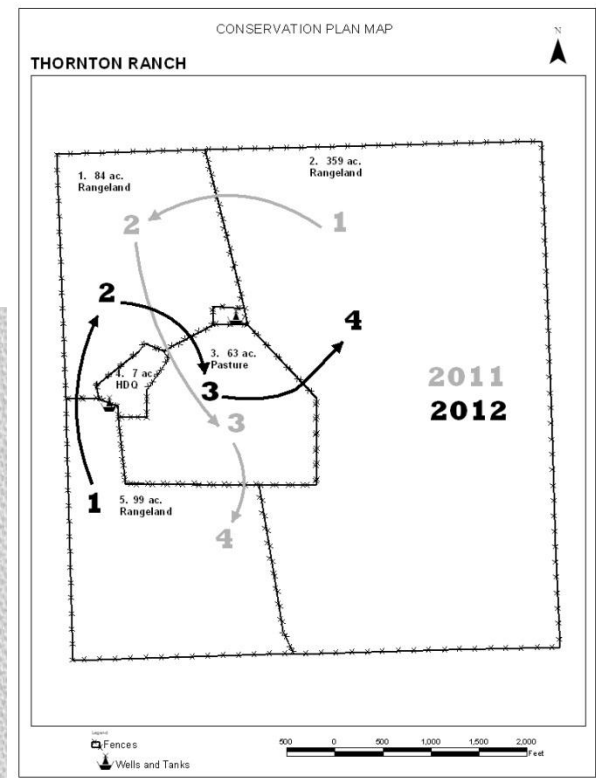
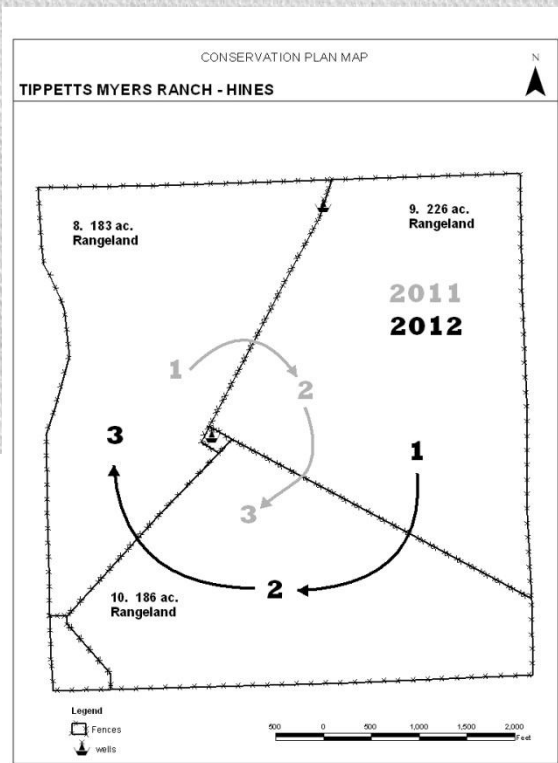
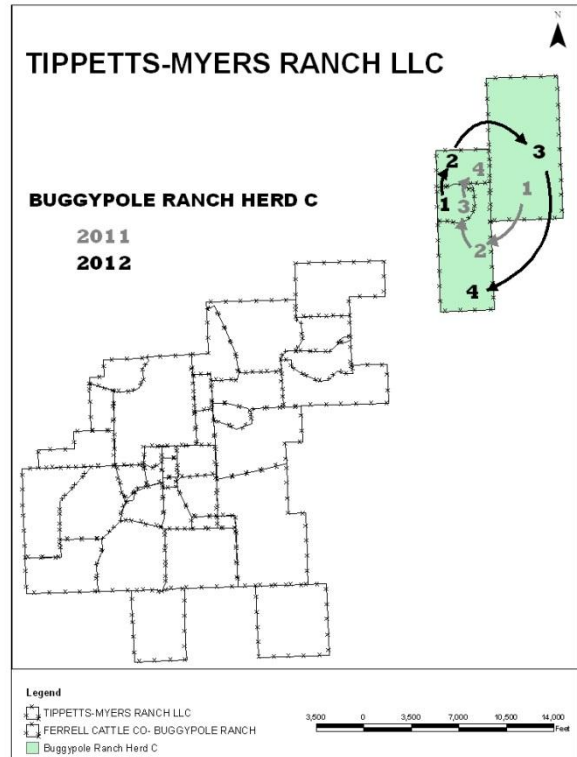
2011
2012



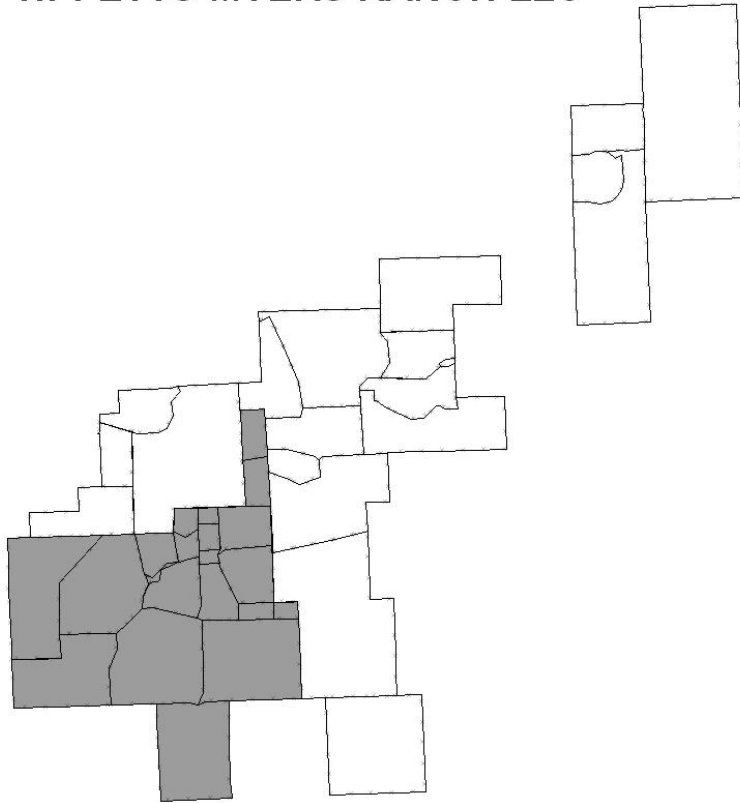
Legend

- TIPPETTS-MYERS RANCH LLC
- FERRELL CATTLE CO- BUGGYPOLE RANCH
- Buggypole Ranch Herd B





TIPPETTS-MYERS RANCH LLC



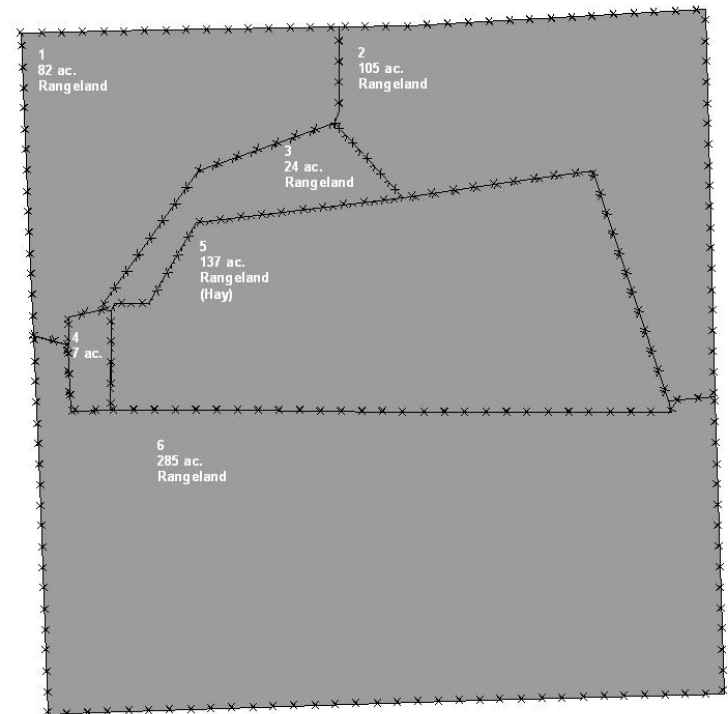
Legend

- TIPPETTS-MYERS RANCH LLC
- FERRELL CATTLE CO- BUGGYPOLE RANCH



CONSERVATION PLAN MAP

TIPPETTS MYERS RANCH - MARIES



Legend

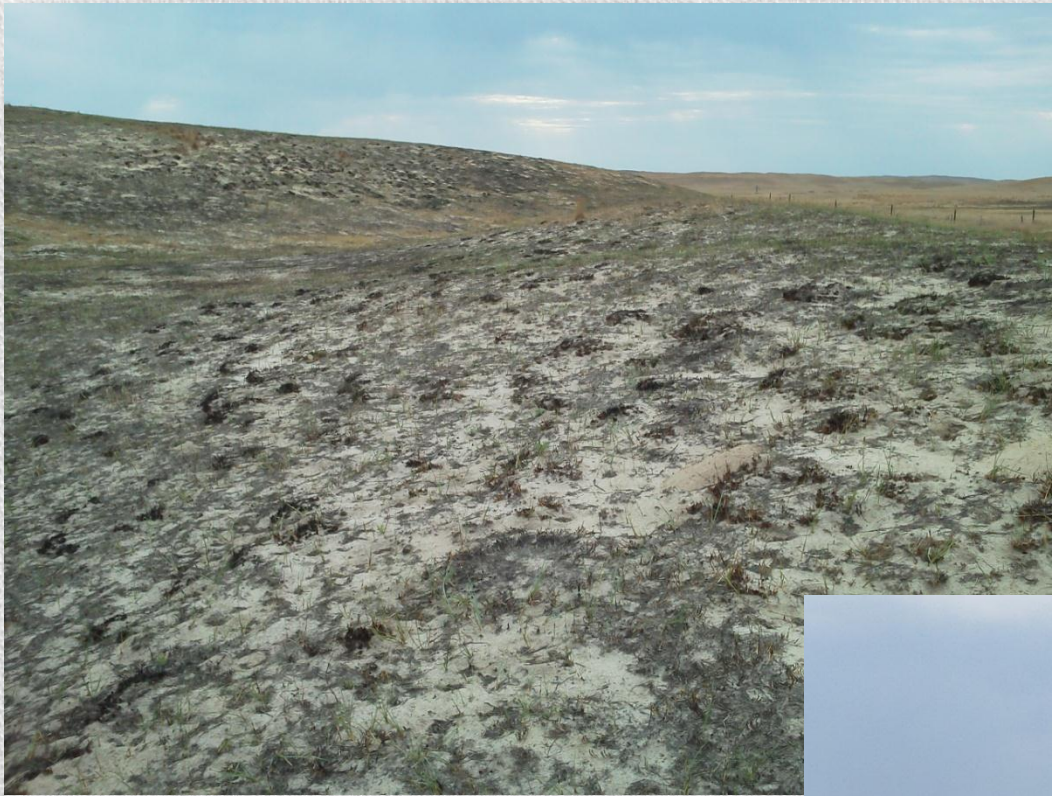
- Fences
- wells











3 weeks after fire



...five days later

